

Part numbers

	2M	3M	DCV	QRV	STAB	S AUX	P AUX
823 008 xxx	✓	✓	✓	✓	✓	✓	✓
823 034 xxx	✓	✓	✓	✓	✓	✓	✓
950 823 008	✓	✓	✓	✓	✓	✓	✓
950 823 034	✓	✓	✓	✓	✓	✓	✓

EB+ Gen3 1M Slave	Part number
Gen3 1M Slave	810 023 001

The EB+ Gen3 Slave assembly (ECU + valve) is only supplied as one complete unit that cannot / should not be separated.

EB+ Gen3 label	Part number
Label	028 5262 09

Sensor kit	Part number
Angled (inc. retaining clip)	950 364 503
Straight (inc. retaining clip)	950 364 506

EB+ Info Centre 2 (DIAGN)	Part number
Haldex Info Centre 2	815 041 001
Haldex Info Centre 2 ADR	815 046 001

COLAS+ (AUX 1, 2, and 3)	Part number
Raise and lower valve with reset to ride	338 061 xxx
Raise and lower valve with reset to ride	338 062 xxx
Raise and lower valve with reset to ride	338 071 xxx

ILAS®-E (AUX 1, 2 and 3)	Part number
Lift axle valve	352 061 xxx
Lift axle valve	352 062 xxx
Lift axle valve	352 070 xxx

TrCM+	Part number
With / without Safe Parking	352 067 xxx

TEM®	Part number
With Safe Parking	352 075 xxx

REV	Part number
With port for control line sensor	351 033 xxx

Control line sensor (AUX 4 or 5)	Part number
M16 x 1.5 thread for REV port	815 022 001

Main assembly service kits	Part number
QRV service kit	950 800 307
DCV service kit	950 800 905

Info Point (AUX 1)	Part number
Info Point with 7 m cable	815 021 001
Info Point with 18 m cable	815 021 011

Soft Docking (AUX 4 or 5)	Part number
Complete system with acoustic & optical aids	815 024 001
Kit without optical aid	815 025 001
Kit without acoustic aid	815 026 001
Basic kit	815 027 001
Lite kit	815 051 001
Sensor adjusting tool	042 708 309

Lining wear system (AUX 4)	Part number
L = 2 m AUX cable - standard	815 015 001
Blanking plug (std version)	027 5260 09
Sensor extension cable (5 m)	814 007 111

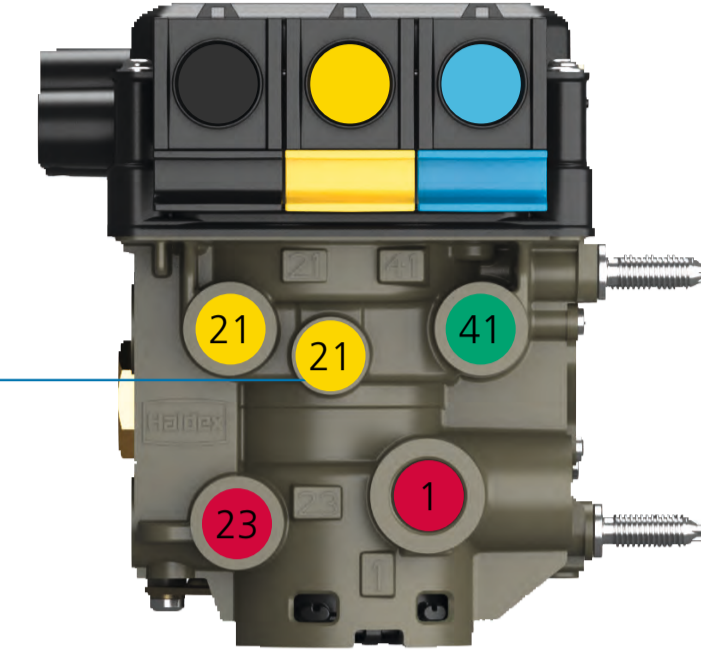
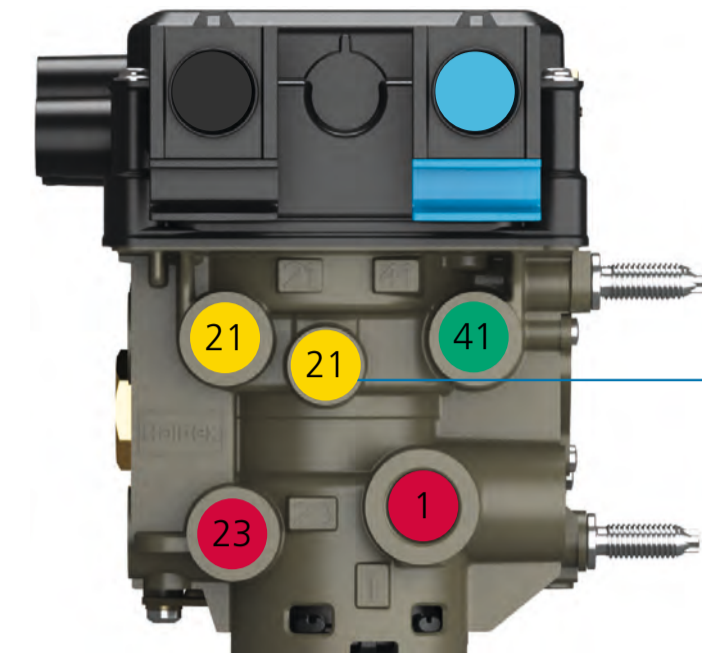
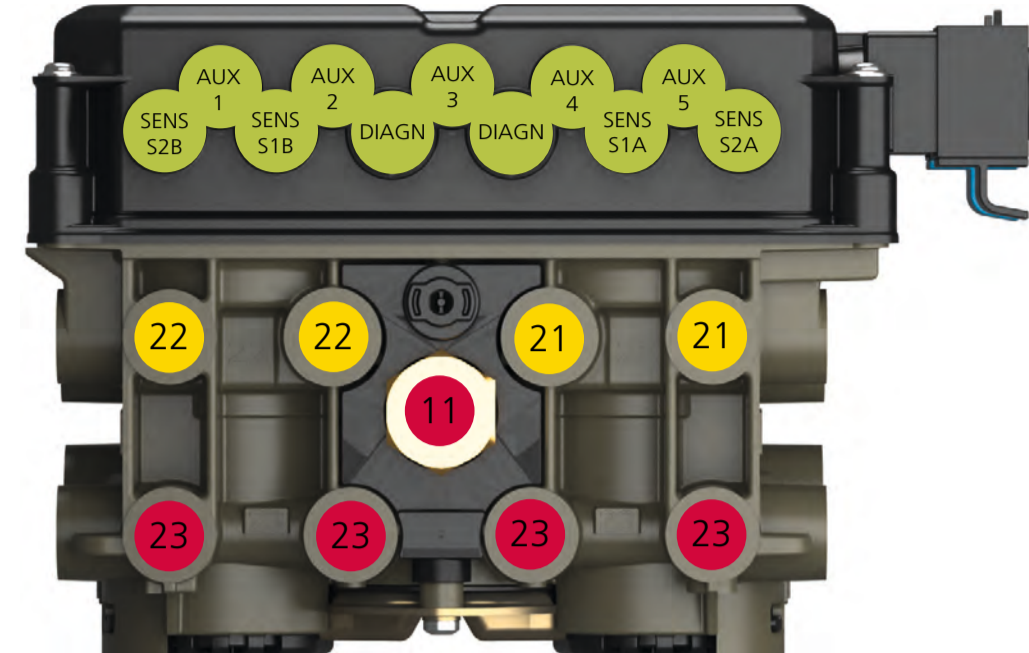
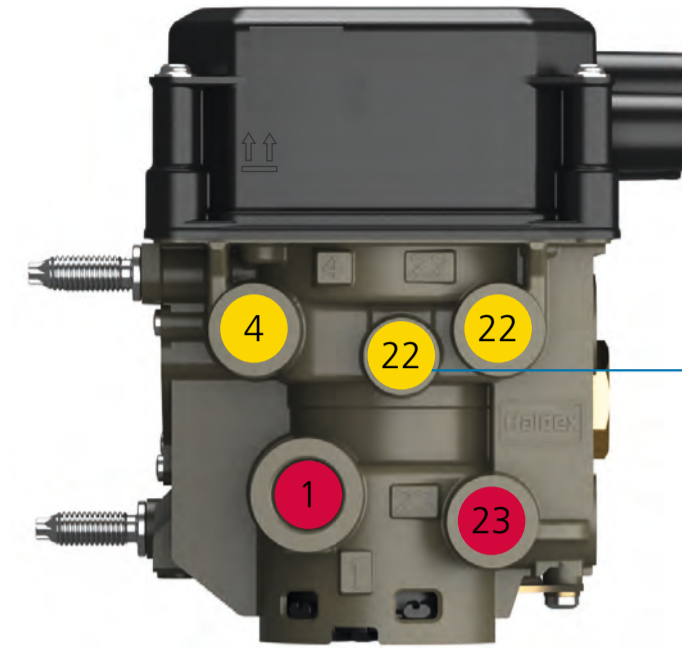
EB+ Gen3 stability (AUX 5)	Part number
External lateral accelerometer	815 012 011

Electronic height sensor (AUX 4 and / or 5)	Part number
Electronic height sensor	815 030 001
Height sensor cable (see AUX cables)	814 012 2xx
Linkage (vertical)	612 025 001
Linkage (horizontal)	003 575 709

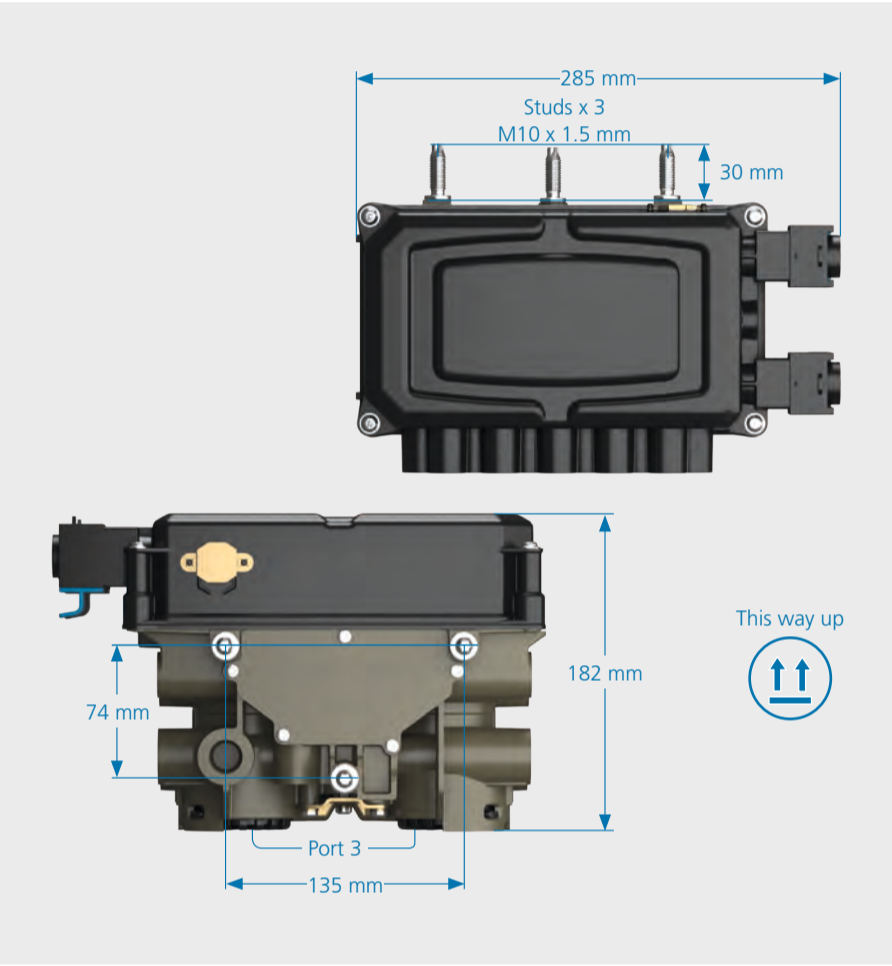
TPMS

TPMS	Part number
Receiver control unit (RCU)	815 052 001
Wheel unit sensor (WUS)	042 727 209
Cable / clamp assembly	003 951 709
Cable stretcher tool	042 727 309
Wheel unit sensor indicator label	005 700 021, 1M
TPMS trigger (hand unit)	815 053 001

DIAGN to female FCI connector	Length
814 040 001 (rear RCU unterminated)	1.2 m
814 040 101 (front RCU unterminated)	1.2 m
814 040 201 (front RCU terminated)	1.2 m
814 040 211 (front RCU terminated)	6 m
814 040 221 (front RCU terminated)	10 m



EB+ Gen3 mounting



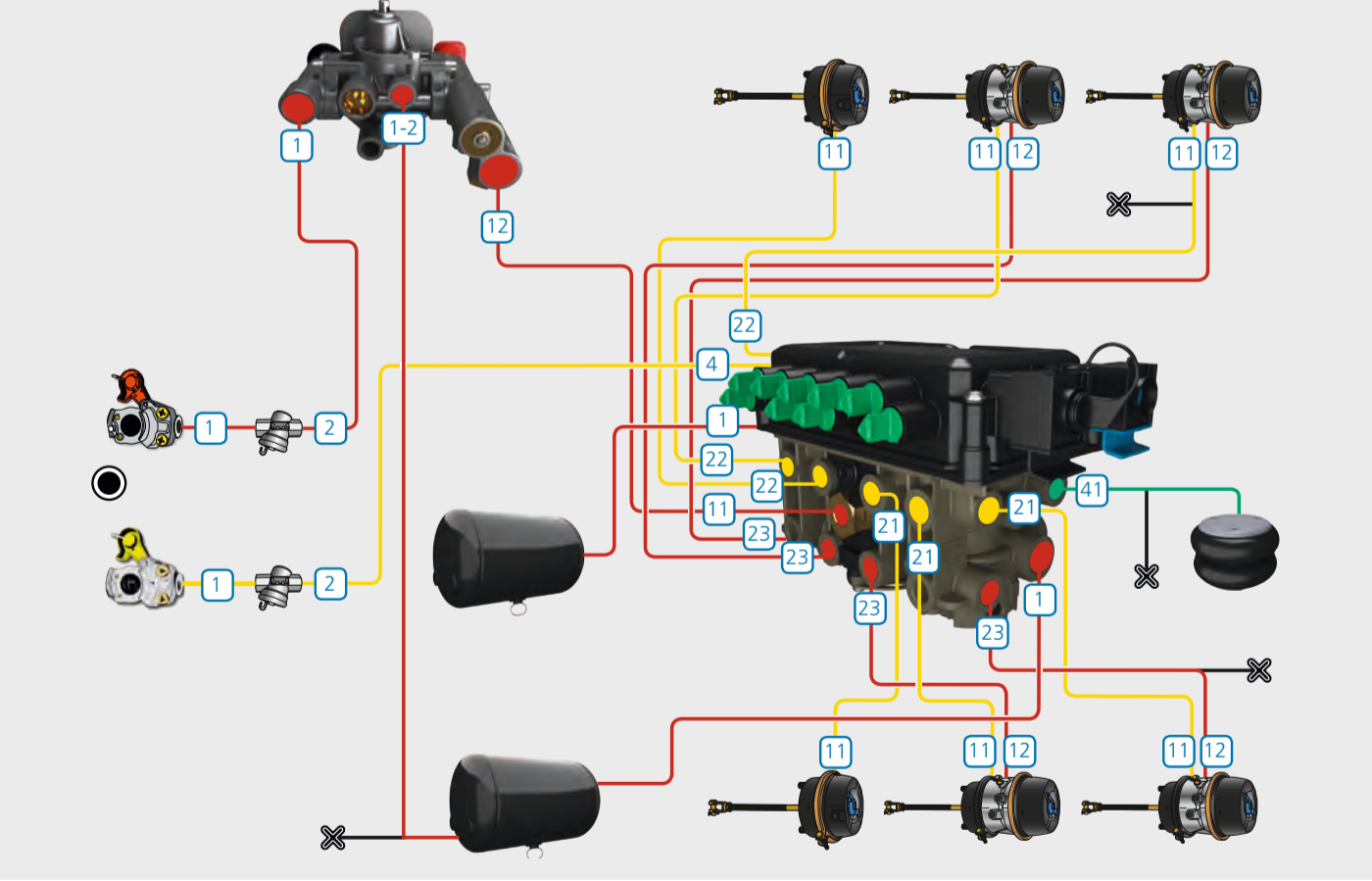
Part numbers and port / fittings

Part Number	Port 4 Side / 22				Front face								Port 41 Side / 21				
	4	1	Test	22	22	22	21	11	23	23	23	23	21	23	Test	41	1
Standard 823 008 001	M16	M22	M12	M16	M16	M16	M16	M16	M16	M16	M16	M16	M16	M16	M12	M16	M22
Standard 823 008 101	8x1	15x1.5	Plug	12x1.5	8x1	12x1.5	12x1.5	12x1.5	12x1.5	8x1	8x1	Plug	Plug	8x1	12x1.5	8x1	8x1
Standard 823 008 111	8x1	15x1.5	8x1	12x1.5	Plug	12x1.5	12x1.5	12x1.5	10x1	8x1	8x1	8x1	8x1	12x1.5	Plug	Plug	8x1
Standard 823 008 213	8x1	16x2	Plug	12x1.5	8x1	12x1.5	12x1.5	12x1.5	8x1	Plug	8x1	8x1	Plug	12x1.5	8x1	Plug	8x1
Standard 823 008 291	8x1	15x1.5	Plug	12x1.5	8x1	12x1.5	12x1.5	12x1.5	8x1	8x1	8x1	8x1	8x1	12x1.5	8x1	Plug	8x1
Premium 823 034 001	M16	M22	M12	M16	M16	M16	M16	M16	M16	M16	M16	M16	M16	M12	M16	M22	
Premium 823 034 101	8x1	15x1.5	Plug	12x1.5	8x1	12x1.5	12x1.5	12x1.5	8x1	8x1	Plug	Plug	8x1	12x1.5	8x1	8x1	15x1.5
Premium 823 034 111	8x1	15x1.5	8x1	12x1.5	Plug	12x1.5	12x1.5	12x1.5	10x1	8x1	8x1	8x1	8x1	12x1.5	Plug	Plug	8x1
Premium 823 034 213	8x1	16x2	Plug	12x1.5	8x1	12x1.5	12x1.5	12x1.5	8x1	Plug	8x1	8x1	Plug	12x1.5	8x1	Plug	8x1
Premium 823 034 291	8x1	15x1.5	Plug	12x1.5	8x1	12x1.5	12x1.5	12x1.5	8x1	8x1	8x1	8x1	8x1	12x1.5	8x1	Plug	8x1
AM 950 823 008	M16	M22	M12	M16	M16	M16	M16	M16	M16	M16	M16	M16	M16	M12	M16	M22	
AM 950 823 034	M16	M22	M12	M16	M16	M16	M16	M16	M16	M16	M16	M16	M16	M12	M16	M22	

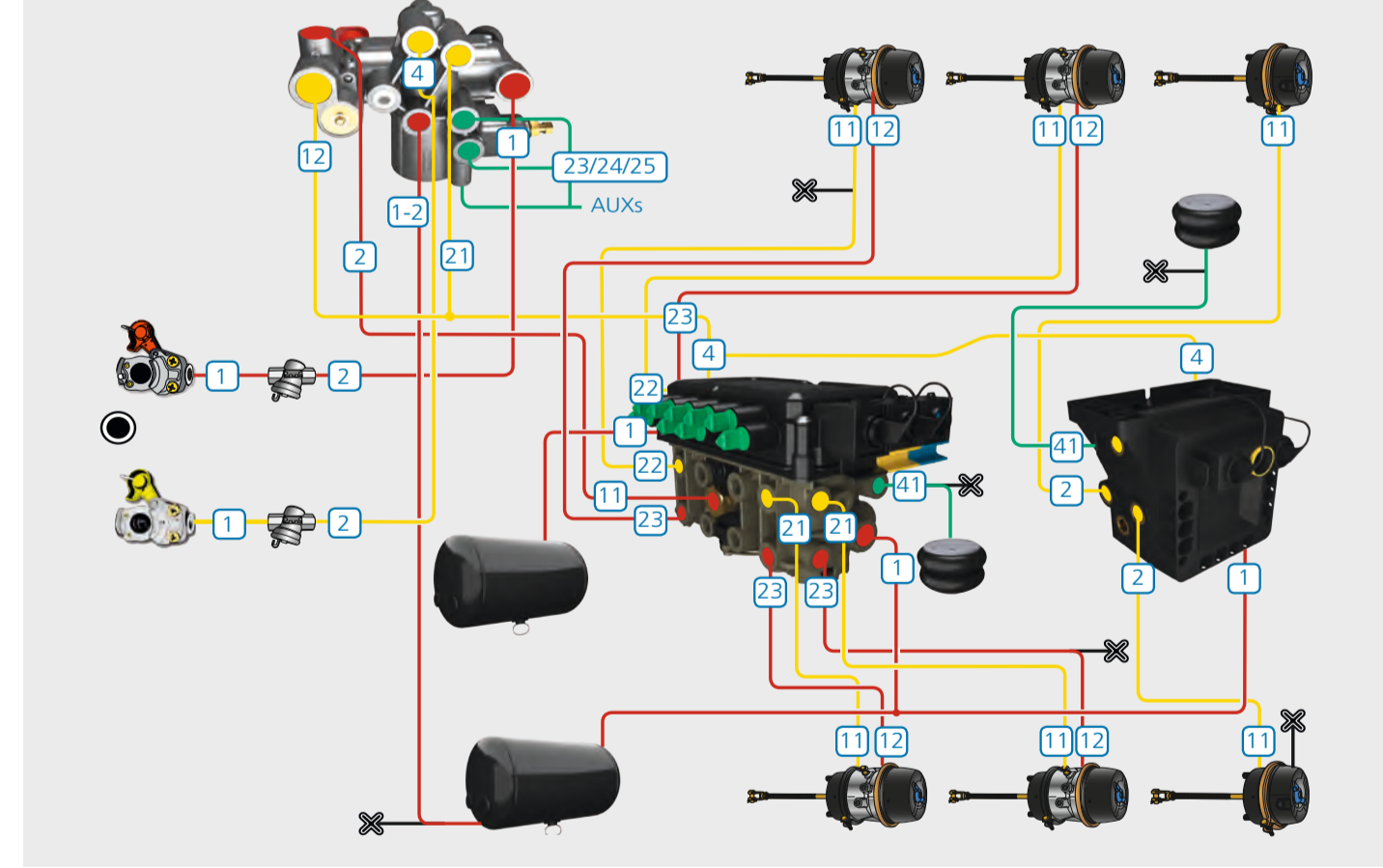
EB+ Gen3 Slave mounting



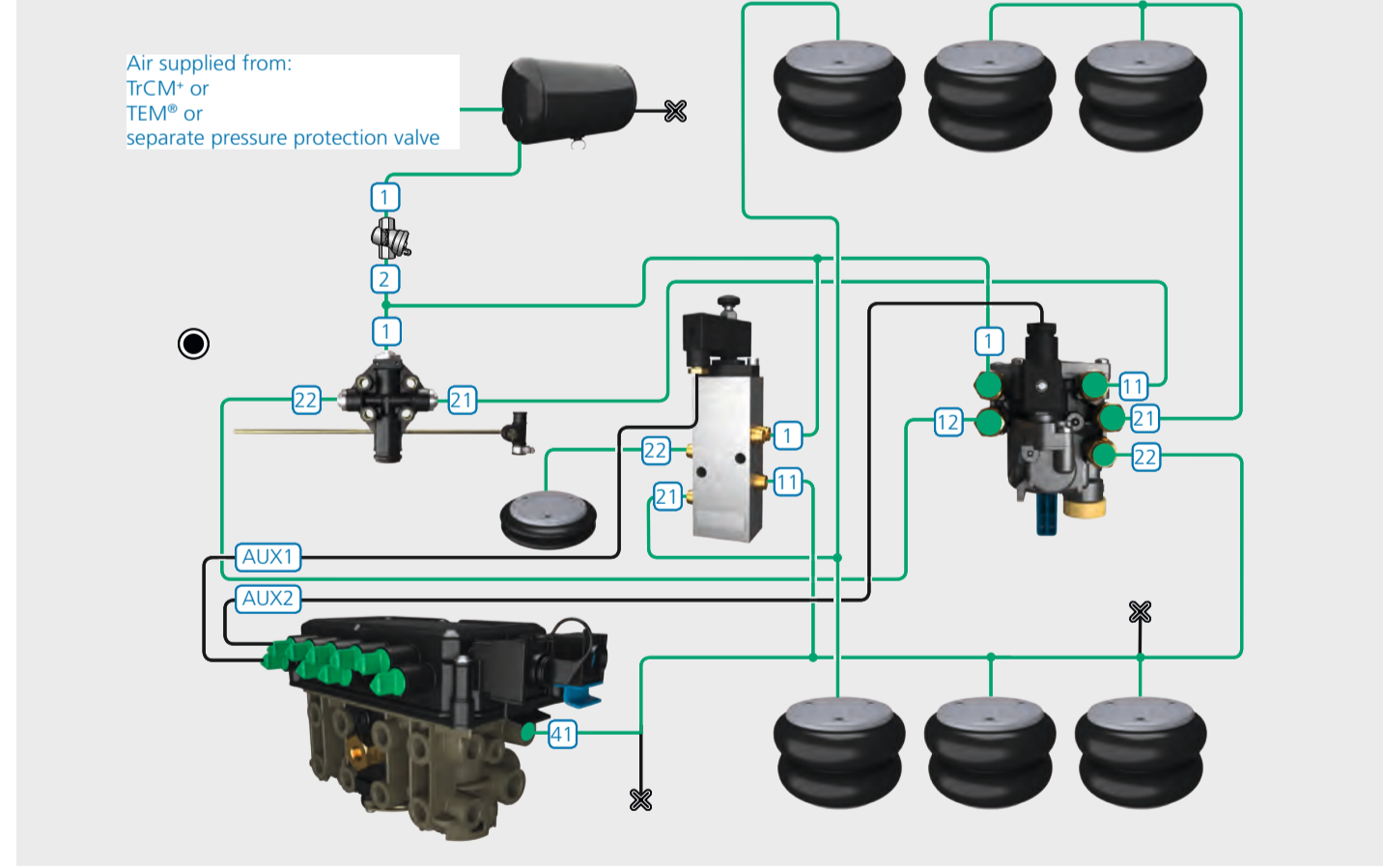
2M, side by side, with TEM®



3M, with TrCM+



2M, COLAS® and ILAS®-E



ISO 7638 cables PWR-A

ISO 7638 socket (unfused)	Length
814 003 102	12 m
814 003 112	16 m
814 003 122	18 m
814 003 132	9 m
814 003 142	14 m
814 003 152	6 m

ISO 7638 Diagnostic	Length
815 018 001	0.5 m

Auxiliary cable	Length
814 001 302	7 m
814 001 312	18 m
814 001 322	2 m
814 001 332	4 m
814 001 342	1 m
814 001 352	12 m
814 001 372	10 m

Male to female (3x2x2 way)	L1	L2
814 028 011	4 m	2 m
814 028 001	0.5 m	0.5 m

Auxiliary (3 pole) to auxiliary (3 pole)	Length
814 032 001	1 m
814 032 011	4 m
814 032 021	7 m
814 032 031	18 m

ISO 7638 to 7-pin DIN connector

ISO 7638 to 7-pin DIN connector	Length
814 003 201	1 m
814 003 211	12 m

ISO power A to 7-pin connector

ISO power A to 7-pin connector	Length
814 026 001	1.5 m
814 026 011	4.5 m
814 026 021	12 m

Auxiliary cable to DIN connector

Auxiliary cable to DIN connector	Length
814 012 201	7 m
814 012 211	18 m
814 012 221	1 m
814 012 231	2 m
814 012 241	5 m
814 012 251	3 m
814 012 261	4 m
814 012 271	10 m

Male to female to female (2x2x2 way)

Male to female to female (2x2x2 way)	L1	L2
814 027 001	0.5 m	0.5 m

Diagnostic software

DIAG+	Part number
EB+ Gen3 diagnostic cable kit	950 800 912
Kit contents:	
ECU / pc interface cable (6.5 m)	814 036 001
EB+ ISO diagnostic cable	815 018 001
EB+ SOV / pc interface cable (6.5 m)	814 011 001
Transit case	042 623 719

EB+ interface	Part number
EB+ interface kit	950 800 909
Kit contents:	
USB pc interface (DIAG+)	815 023 011
USB cable	042 707 309

Haldex Fleet+ is the winner of the Trailer Innovation Award 2013 in the 'Smart Trailer' category. This pan-European awards scheme involving leading road transport magazines from ten European countries is held every two years, to tie in with IAA (Internationale Automobil-Ausstellung) commercial vehicles show in Hannover, Germany.

Fleet+	Part number
Fleet+ interface kit	950 800 910
Kit contents:	
USB pc interface (Fleet+)	815 023 011
USB cable	042 707 309

Diagnostic cables (DIAGN)

Info Centre 2 to side of vehicle	Length
814 025 001	1 m

Side of vehicle (SOV) to ECU	Length
814 030 001	6.5 m
814 030 011	2.5 m
814 030 021	5 m
814 030 031	15 m

Vehicle to pc interface (dongle)	Length
814 011 001	6.5 m
814 011 011	15 m

DIAGN to DIN	Length
814 033 001	1 m
814 033 011	12 m

DIAGN to pc interface (dongle)	Length
814 036 001	6.5 m
814 036 011	15 m
814 036 021	20 m

DIAGN to DIAGN	Length
814 037 001	6.5 m
814 037 011	0.5 m
814 037 021	8 m
814 037 031	14 m

Y-splitter 4x4x4 way	Length
814 038 001	0.5 m

3M link cables

Sensor cable	Length
814 041 001	12 m
814 041 011	2 m
814 041 021	5 m
814 041 031	14 m
814 041 041	10 m
814 041 051	8 m

Cables PWR-B

Super AUX cable	Length
814 002 301	6 m
814 002 311	12 m
814 002 321	9 m
814 002 331	4 m
814 002 341	1 m

Power B to ISO 15170 Super AUX	Length
814 004 301 (4 pole)	1 m
814 004 311 (4 pole)	6 m

Power B to ISO 15170 Super AUX	L1	L2
814 029 001 (4 pole)	1 m	1 m
814 029 011 (4 pole)	6 m	5 m
814 029 021 (4 pole)	6 m	1 m

Sensor cables (SENS)

Sensor cable	Length
814 004 401	3 m
814 004 411	6 m
814 004 421	2 m
814 0	